

Lot Sales Summary

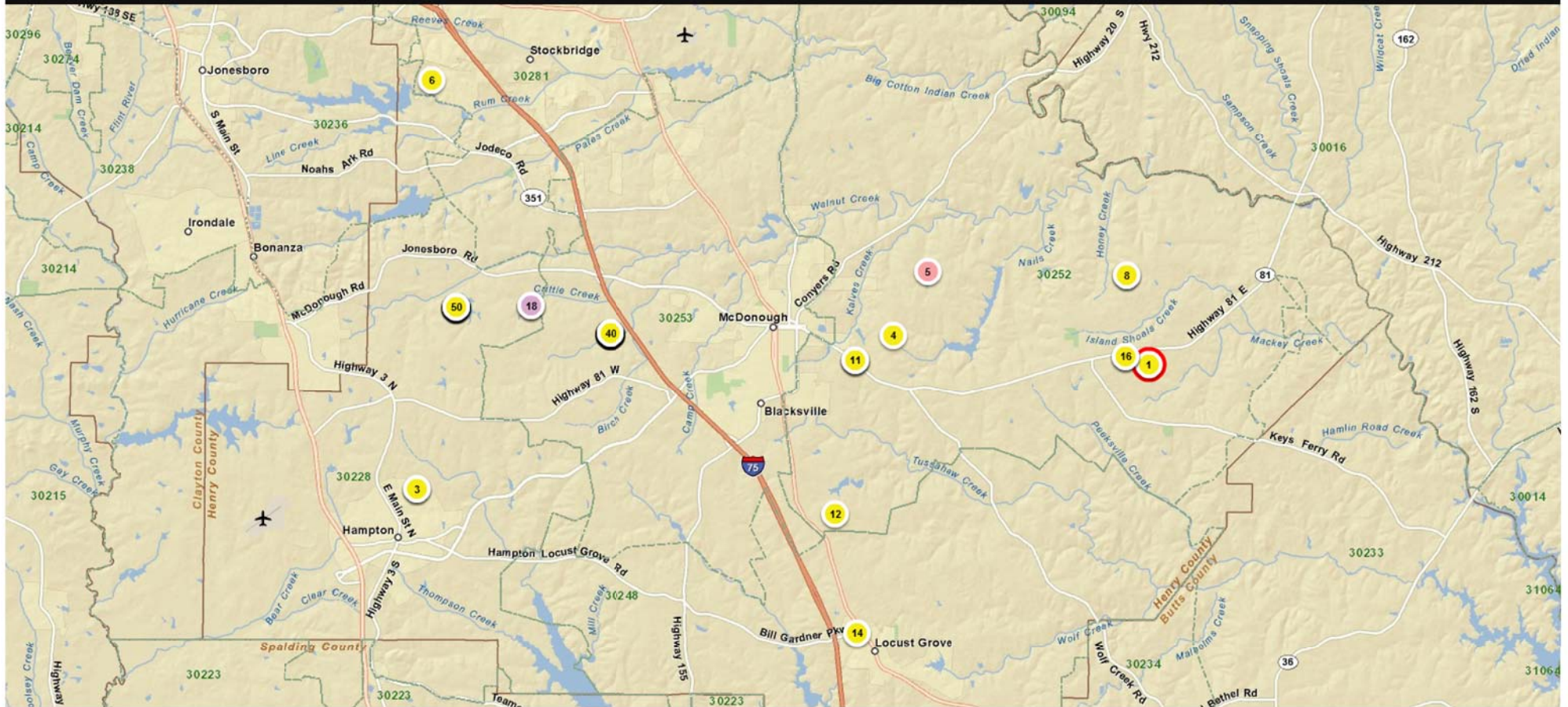
SALE DATE Between 01/01/2010 AND 12/31/2010, County = Henry, UNIT TYPE = d

Total Units: 170
Average Price: \$130,983

Rank	Subdivision	Dist	LL	Date	Price	Acres	Lots	Lot Price	Buyer	Seller
1	Aubrees Landing	8	148	03/29/2010	\$19,500	0.00	1	\$19,500	K & M Homes Inc	Bradford, James
2	Bridgeport	6	232	12/20/2010	\$13,200	0.00	2	\$6,600	The Atkinson Trust Llc	Mf Georgia I Llc
3	Bridgeport	6	232	03/24/2010	\$14,995	0.00	3	\$4,998	Mf Georgia I Llc	Bank Of North Georgia
4	Bridleridge	7	138	03/16/2010	\$105,000	0.00	5	\$21,000	Bridleridge Homes Llc	Bridleridge Ventures Llc
5	Brightwood Place	7	86	09/29/2010	\$415,874	0.00	65	\$6,398	RI Regi Georgia Llc	Regions Bank
6	Brookwood At Monarch Village	12	8	05/03/2010	\$8,000	0.00	1	\$8,000	Jones And Baral Properties	Pathway Henry I Lp
7	Burnham Estate	8	110	12/20/2010	\$24,480	0.00	4	\$6,120	The Atkinson Trust Llc	Mf Georgia li Llc
8	Burnham Estate	8	110	06/24/2010	\$26,342	0.00	4	\$6,586	Mf Georgia li Llc	Synovus Bank
9	Charlestons Walk	7	152	12/20/2010	\$25,650	0.00	3	\$8,550	The Atkinson Trust Llc	Mf Georgia li Llc
10	Charlestons Walk	7	152	06/24/2010	\$27,650	0.00	3	\$9,217	Mf Georgia li Llc	Synovus Bank
11	Charlestons Walk	8	238	06/24/2010	\$2,893	0.00	1	\$2,893	Mf Georgia li Llc	Synovus Bank
12	Colonies At Williamsburg	7	249	06/24/2010	\$36,972	0.00	8	\$4,622	Mf Georgia li Llc	Synovus Bank
13	Cornerstone, Flat Shls Mnr,Eag Ne	6	16	03/15/2010	\$405,000	0.00	0	\$0	Re-36 Llc	Community Capital Bank
14	Cottage Grove	2	200	01/19/2010	\$72,000	0.00	8	\$9,000	Cottage Grove li Jhj Llc	Branch Banking And Trust Cor
15	Craig Farm	8	147	12/20/2010	\$10,800	0.00	3	\$3,600	The Atkinson Trust Llc	Mf Georgia li Llc
16	Craig Farm	8	147	06/24/2010	\$12,843	0.00	3	\$4,281	Mf Georgia li Llc	Synovus Bank
17	Creekside Estates	6	116	11/04/2010	\$26,000	0.00	1	\$26,000	Mcnaair, Winston	Larry Phillips Construction Inc
18	Creekside Estates	6	116	12/01/2010	\$375,000	0.00	15	\$25,000	Peachtree Communities Llc	Larry Phillips Construction Inc

Lot Sales Summary

SmartNumbers



Less than \$125,000

\$151,000 to \$175,000

\$200,000 to \$250,000

\$301,000 to \$400,000

\$125,000 to \$150,000

\$176,000 to \$200,000

\$250,000 to \$300,000

Greater than \$400,000