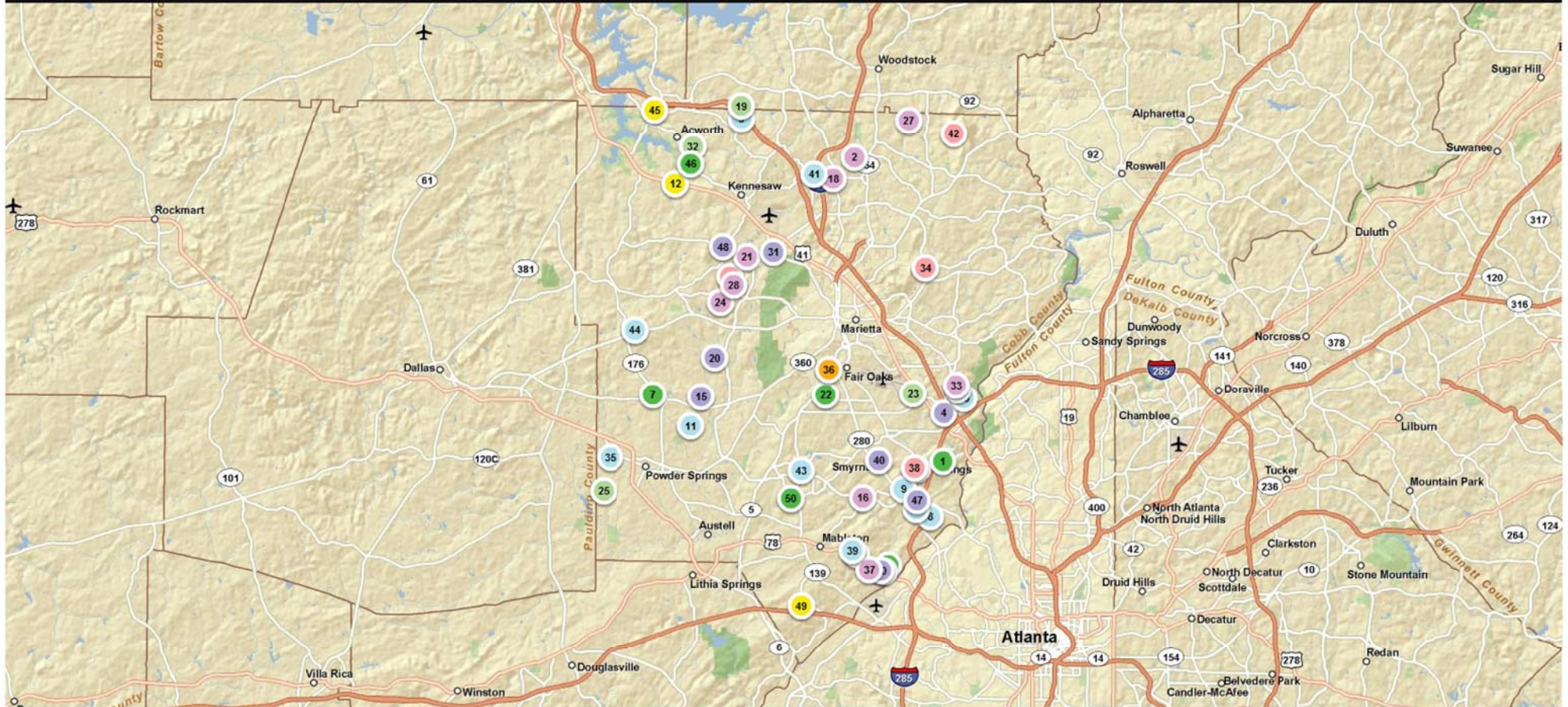


Subdivision Summary

SALE DATE Between 01/01/2010 AND 12/31/2010, County = Cobb

Total Units: 1150
Average Price: 301,079

| Rank | Subdivision | Units | Mkt Share | Min Sale | Max Sale | Volume | Average Sale |
|------|----------------------------|-------|-----------|-----------|-----------|--------------|--------------|
| 1 | Vinings Main | 55 | 4.8% | \$130,000 | \$292,000 | \$10,478,310 | \$190,515 |
| 2 | Canterbury | 38 | 3.3% | \$281,400 | \$483,291 | \$14,126,223 | \$371,743 |
| 3 | Wakefield Estates | 36 | 3.1% | \$350,465 | \$473,910 | \$14,601,879 | \$405,608 |
| 4 | Towns Of Crescent Park | 29 | 2.5% | \$249,900 | \$289,900 | \$7,655,241 | \$263,974 |
| 5 | Arbor Walk | 27 | 2.4% | \$179,125 | \$237,528 | \$5,649,324 | \$209,234 |
| 6 | Oakdale Bluffs | 27 | 2.4% | \$176,952 | \$229,704 | \$5,194,769 | \$192,399 |
| 7 | Retreat At Lost Mountain | 25 | 2.2% | \$157,495 | \$227,000 | \$4,646,690 | \$185,868 |
| 8 | Westbury | 25 | 2.2% | \$230,000 | \$250,469 | \$5,975,075 | \$239,003 |
| 9 | Laurel Creek Ridge | 22 | 1.9% | \$219,900 | \$273,325 | \$5,437,674 | \$247,167 |
| 10 | Horizon | 21 | 1.8% | \$185,000 | \$450,000 | \$5,246,471 | \$249,832 |
| 11 | Adams Landing | 19 | 1.7% | \$196,000 | \$245,239 | \$4,189,175 | \$220,483 |
| 12 | Cyrus Creek | 19 | 1.7% | \$101,000 | \$127,900 | \$2,116,800 | \$111,411 |
| 13 | Views | 19 | 1.7% | \$195,000 | \$228,799 | \$4,143,479 | \$218,078 |
| 14 | Paper Chase Farm | 16 | 1.4% | \$345,000 | \$599,000 | \$6,846,393 | \$427,900 |
| 15 | Robinson Glen | 16 | 1.4% | \$249,990 | \$321,166 | \$4,373,671 | \$273,354 |
| 16 | Woodbridge Crossing | 16 | 1.4% | \$264,000 | \$340,000 | \$5,012,010 | \$313,251 |
| 17 | Cobblestone Creek Twnhms | 13 | 1.1% | \$168,000 | \$178,250 | \$2,257,231 | \$173,633 |
| 18 | Brookhaven Of East Cobb 55 | 12 | 1.0% | \$292,635 | \$404,152 | \$3,997,983 | \$333,165 |



Less than \$125,000

\$151,000 to \$175,000

\$200,000 to \$250,000

\$301,000 to \$400,000

\$125,000 to \$150,000

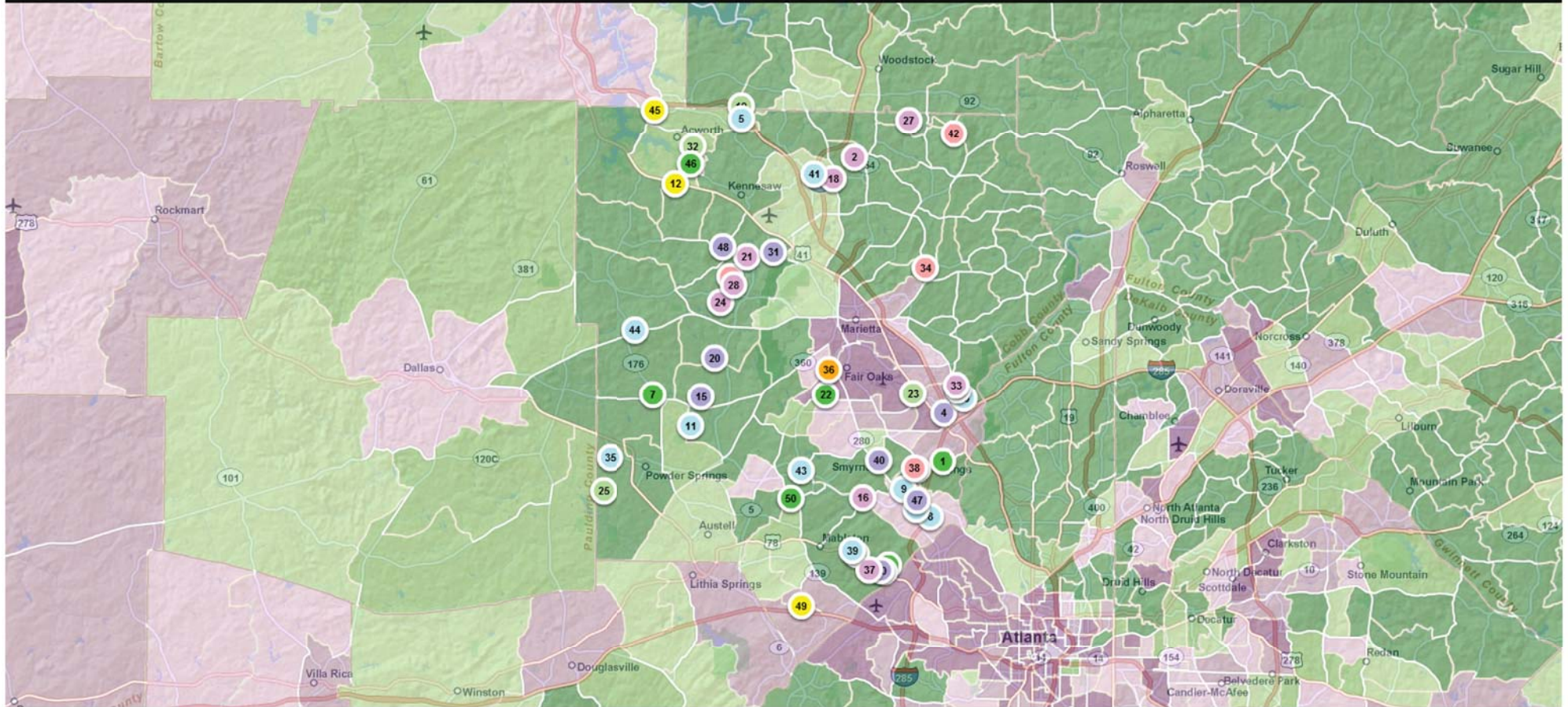
\$176,000 to \$200,000

\$250,000 to \$300,000

Greater than \$400,000

Subdivision Summary on Median Net Worth Demographic Layer

SmartNumbers



Less than \$125,000

\$151,000 to \$175,000

\$200,000 to \$250,000

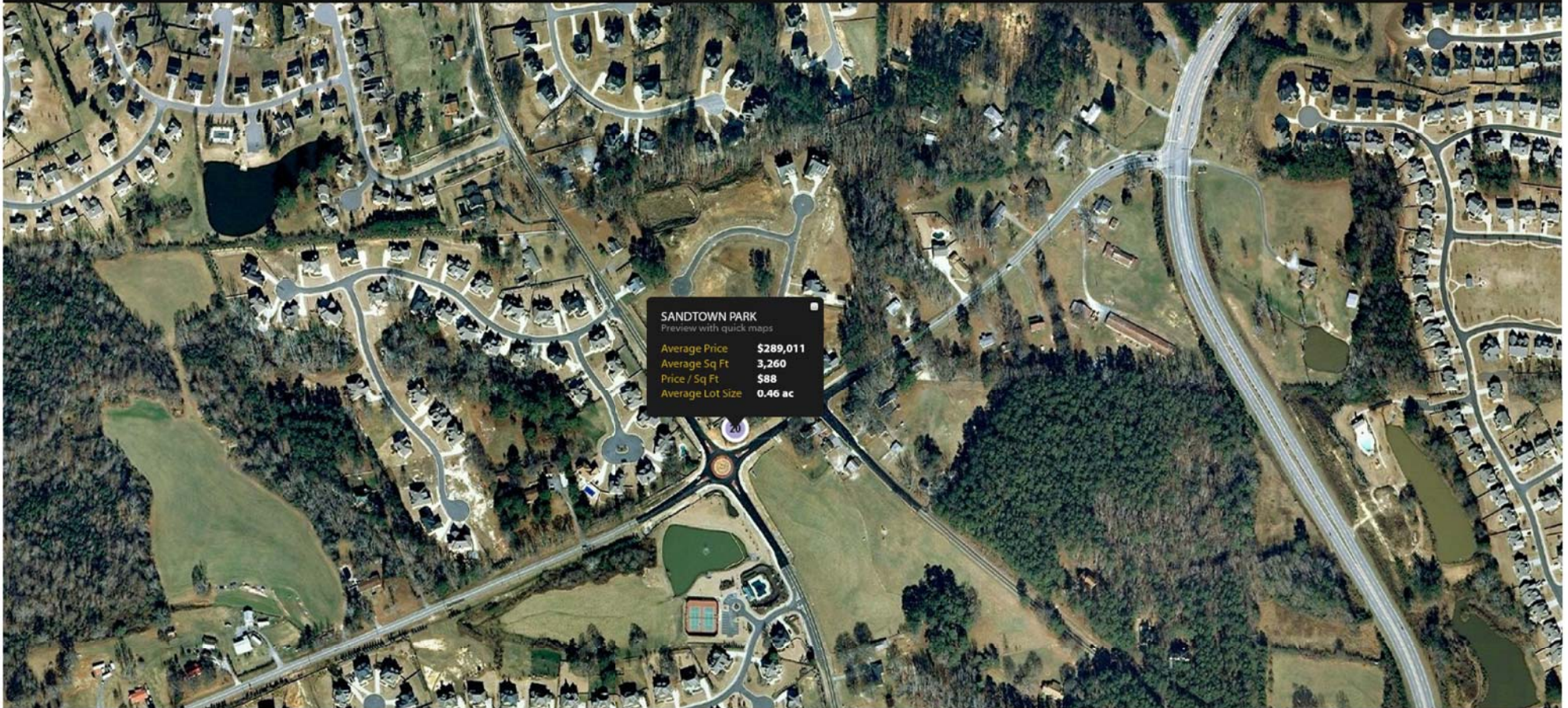
\$301,000 to \$400,000

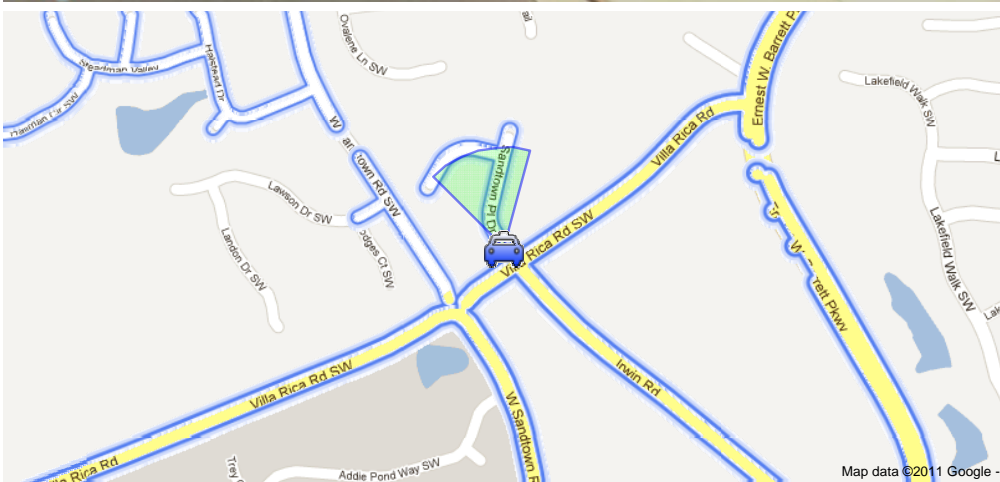
\$125,000 to \$150,000

\$176,000 to \$200,000

\$250,000 to \$300,000

Greater than \$400,000





Dual Maps Streetview [Start](#) [GM](#) [VE](#) [Full](#)



Interactive Detailed Subdivision Mapping