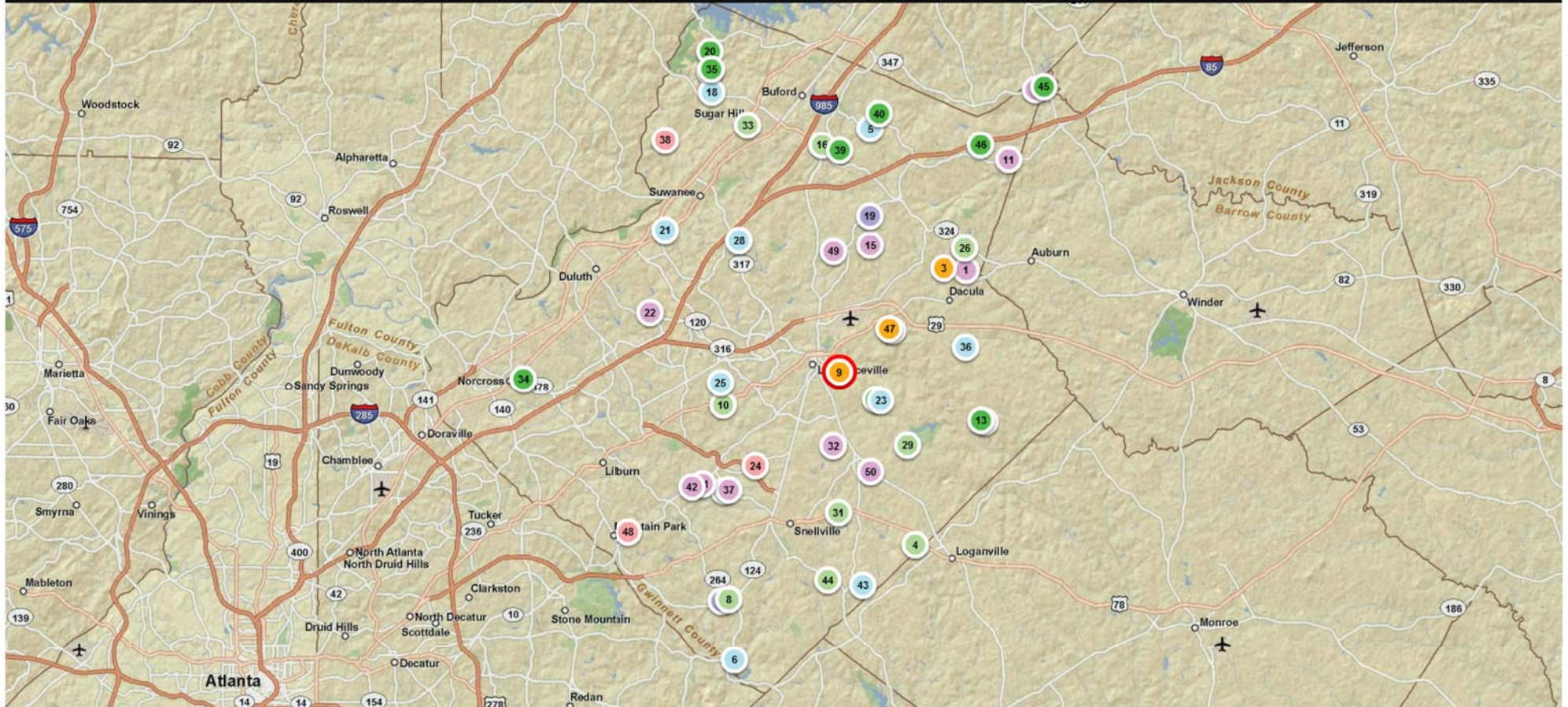


Subdivision Statistics

SALE DATE Between 01/01/2010 AND 12/31/2010, County = Gwinnett, UNIT TYPE = d

Total Units: 582
Average Price: \$260,652

Rank	Subdivision	Records	Price	SqFt	Bsmt \$ SqFt	Slab \$ SqFt	Lot	Garage	Rooms	Bdrms	Baths
1	Abi Glen	4	\$312,325	3830	\$85	\$77	0.28	2.8	10.5	5.3	4.3
2	Alcovy Falls	5	\$116,999	1470	\$0	\$80	0.14	1.8	6.0	3.0	2.4
3	Alcovy Ridge	1	\$127,500	2316	\$0	\$55	0.13	2.0	7.0	4.0	2.5
4	Alexis In Towne	1	\$152,000	2854	\$0	\$53	0.18	2.0	8.0	4.0	2.5
5	Amelia Parc	4	\$208,920	3323	\$0	\$63	0.14	2.0	8.8	4.5	2.8
6	Anderson Livsey Estates	1	\$232,500	2757	\$84	\$0	1.17	3.0	8.0	4.0	2.5
7	Annistown Meadows	1	\$259,900	2966	\$88	\$0	0.16	2.0	9.0	5.0	3.0
8	Arbor Oaks	5	\$167,684	2668	\$0	\$63	0.15	2.0	7.6	4.0	2.5
9	Arlington Point	2	\$148,500	2308	\$0	\$64	0.14	2.0	7.5	4.5	2.8
10	Arnold Mill Station	9	\$160,513	2248	\$0	\$71	0.12	2.0	7.6	3.9	2.6
11	Ashbury Park	1	\$325,000	3293	\$99	\$0	0.34	2.0	9.0	4.0	3.5
12	Austin Commons	1	\$219,990	3629	\$0	\$61	0.19	2.0	9.0	5.0	4.0
13	Austin Glenn	2	\$182,000	2793	\$0	\$65	0.20	2.0	9.0	5.0	2.5
14	Austin Woods	2	\$161,950	1999	\$0	\$81	0.16	2.0	7.5	4.0	2.5
15	Austins Landing	2	\$305,000	3308	\$94	\$90	0.24	2.5	10.5	5.0	4.0
16	Autumnbrooke	2	\$170,893	2078	\$0	\$82	0.13	2.0	7.5	4.0	2.5
17	Avington Glen	7	\$176,357	3076	\$57	\$58	0.16	2.0	8.6	4.1	3.2
18	Avonley Creek	10	\$239,422	2702	\$94	\$77	0.19	2.0	8.8	4.0	2.6



Less than \$125,000

\$151,000 to \$175,000

\$200,000 to \$250,000

\$301,000 to \$400,000

\$125,000 to \$150,000

\$176,000 to \$200,000

\$250,000 to \$300,000

Greater than \$400,000